

Moderately Aggressive Index-Based/ETF Strategy

Tax Status: Qualified

ETFs: 60% Equity / 40% Fixed Income

Analysis Date: 9-30-2011



STRATEGY OVERVIEW:

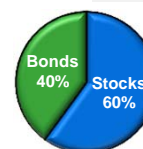
Investment Objective:

Moderately Aggressive Strategy seeks to achieve higher profits with the potential of short-term losses.

Investor Suitability:

Moderately Aggressive Strategy is appropriate for investors with slightly above average risk tolerance and/or intermediate to long term investment horizons.

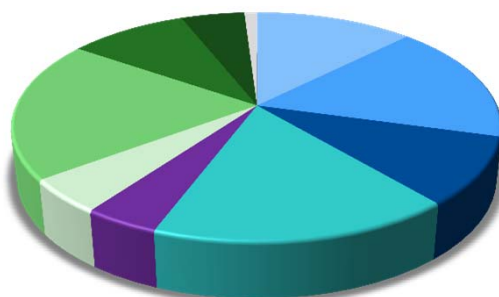
Risk Rating:



PORTFOLIO OVERVIEW:

Asset Allocation:

- Large Cap Stocks, 12.5%
- Mid Cap Stocks, 16.8%
- Small Cap Stocks, 9.5%
- International Stocks, 17%
- REITs, 4.3%
- TIPs, 4.8%
- Municipal Bonds, 0%
- U.S. Taxable Bonds, 19.9%
- International Bonds, 9.4%
- High Yield Bonds, 5%
- Cash, 1%



Quick Portfolio Facts:

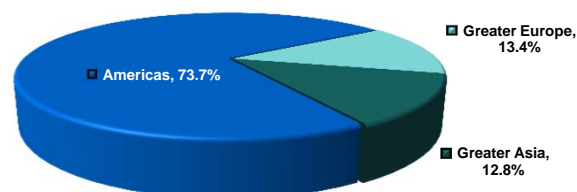
Total ETFs Holdings:	16
Yield (12M Trailing)	2.6%
Expense Ratio:	0.28%

EQUITY OVERVIEW:

Equity Valuation:

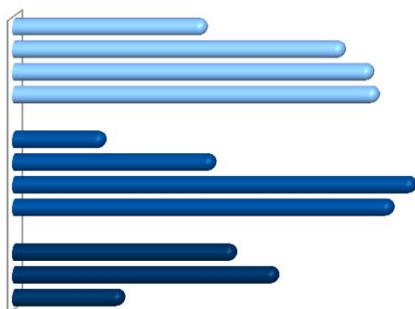
# of Stock Holdings (within ETFs):	9,099
Market Cap (Geo Avg, \$MM)	\$6,483
P/E	15.1X
P/BV	1.7X
P/Cash	6.8X
Earnings Growth (LT)	10.4%
Dividend Yield	2.9%

Geographical Allocation (% of Stocks):



Sector Allocation (% of Stocks):

- Basic Materials, 6.6%
- Consumer Cyclical, 11.3%
- Financial Services, 12.3%
- Real Estate, 12.5%
- Communication Services, 3.1%
- Energy, 6.9%
- Industrials, 13.8%
- Technology, 13%
- Consumer Defensive, 7.6%
- Healthcare, 9.1%
- Utilities, 3.8%



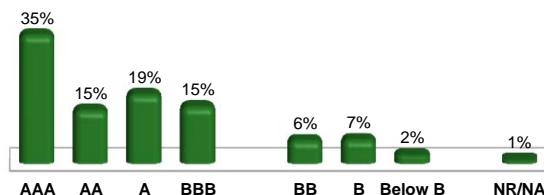
North America	71.7%
Latin America	2.1%
United Kingdom	3.9%
Europe - Developed	7.4%
Europe - Emerging	1.1%
Africa / Middle East	1.0%
Japan	4.4%
Australasia	1.8%
Asia - Developed	3.4%
Asia - Emerging	3.2%

FIXED INCOME OVERVIEW:

Fixed Income Statistics:

# of Bond Holdings (within ETFs):	2,436
Effective Duration (Avg)	3.81
Coupon (Weighted Avg)	4.8%
Investment Grade %	84.0%
Below Investment Grade %	15.0%

Credit Quality (% of Bonds):



Moderately Aggressive Index-Based/ETF Strategy

Tax Status: Qualified

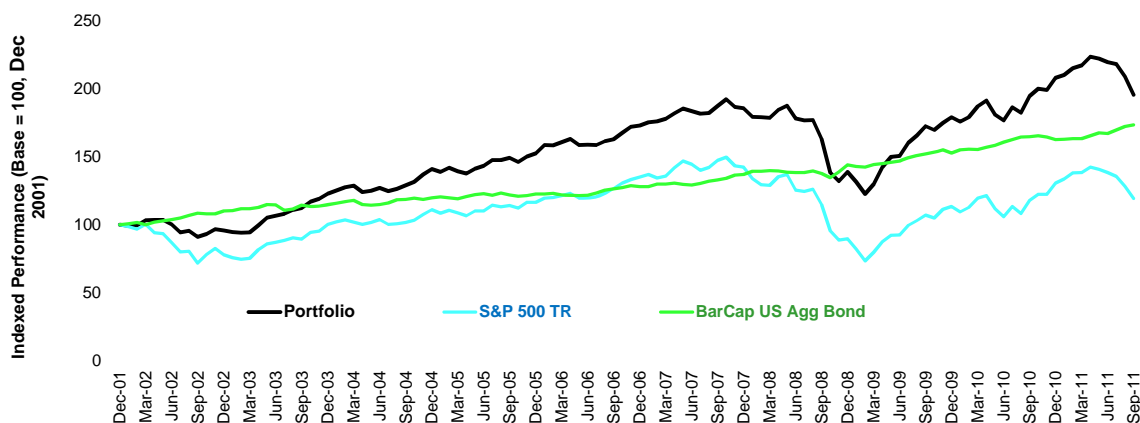
ETFs: 60% Equity / 40% Fixed Income

Performance Date: 9-30-2011



Hypothetical Performance (Rebalanced in December & June):

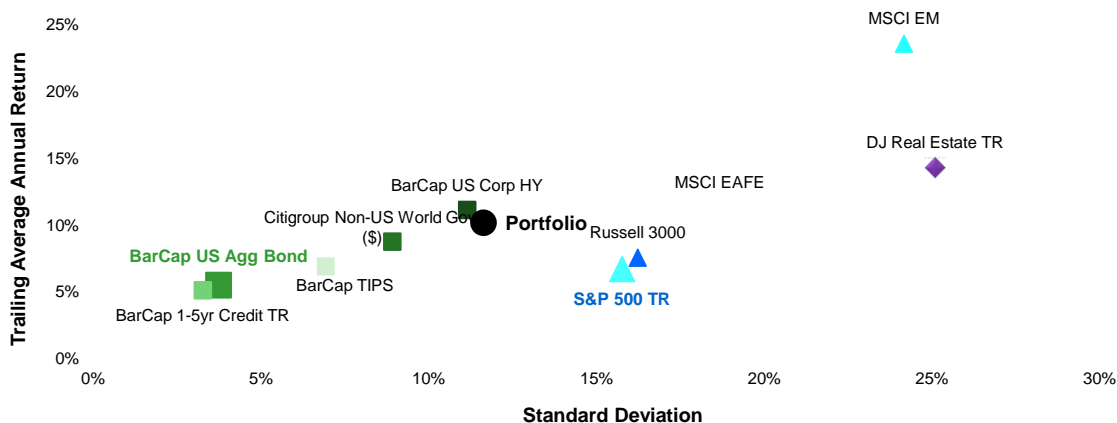
For December 31, 2001 through September 30, 2011



Total Return (%)	2002	2003	2004	2005	2006	2007	2008	2009	2010	YTD
Portfolio	-4.26%	28.42%	14.65%	8.14%	13.38%	7.35%	-25.21%	29.05%	16.11%	-5.99%
S&P 500 TR	-22.10%	28.68%	10.87%	4.89%	15.80%	5.49%	-37.00%	26.47%	15.06%	-8.67%
+/-	17.84%	-0.26%	3.78%	3.24%	-2.42%	1.86%	11.79%	2.58%	1.05%	2.69%
BarCap US Agg Bond	10.25%	4.11%	4.34%	2.43%	4.33%	6.97%	5.24%	5.93%	6.54%	6.65%
+/-	-14.51%	24.31%	10.31%	5.71%	9.06%	0.38%	-30.44%	23.11%	9.58%	-12.63%

Risk/Return Analysis (Rebalanced in December & June):

For December 31, 2001 through September 30, 2011



Trailing Return	12 M	3 Y*	5 Y*	Since Dec 31, 2001*	Standard Deviation*	12 M	3 Y	5 Y	Since Dec 31, 2001
Portfolio	0.52%	6.26%	3.71%	7.12%	Portfolio	10.75%	16.85%	14.25%	11.63%
S&P 500 TR	1.15%	1.23%	-1.18%	1.82%	S&P 500 TR	13.70%	21.25%	18.32%	15.76%
+/-	-0.63%	5.03%	4.89%	5.30%	+/-	-2.96%	-4.40%	-4.07%	-4.13%
BarCap US Agg Bond	5.26%	7.97%	6.53%	5.81%	BarCap US Agg Bond	2.96%	4.05%	3.62%	3.74%
+/-	-4.74%	-1.71%	-2.81%	1.31%	+/-	7.78%	12.80%	10.63%	7.90%

* Annualized

Past performance is no guarantee of future results. The hypothetical portfolios have been constructed using unmanaged financial indices to represent certain assets classes and are intended solely to illustrate the potential impact of implementing a general investment strategy. All indices are unmanaged and performance of the indices include reinvestment of dividends and interest income, unless otherwise noted, are not illustrative of any particular investment and an investment cannot be made in any index.

Disclosures: © 2011 MACRO Consulting Group, LLC. All rights reserved. The information, data, analyses and opinions contained herein (1) include the confidential and proprietary information of MACRO Consulting Group, LLC. (2) may not be copied or redistributed, (3) do not constitute investment advice offered by MACRO Consulting Group, LLC, (4) are provided solely for informational purposes and therefore are not an offer to buy or sell a security, and (5) are not warranted to be correct, complete or accurate. MACRO Consulting Group, LLC shall not be responsible for any trading decisions, damages, or other losses resulting from, or related to, this information, data, analysis or opinions or their use.

This material is for educational and informational purposes only and is distributed by MACRO Consulting Group, LLC. The registrations and memberships described herein in no way imply that FINRA or SIPC have endorsed the above-referenced entities to provide any of the services discussed herein.

Any statements regarding market events, future events or other similar statements constitute only subjective views, are based upon expectations or beliefs, should not be relied on, are subject to change due to a variety of factors, including fluctuating market conditions, and involve inherent risks and uncertainties, both general and specific, many of which cannot be predicted or quantified and are the beyond a manager's control. Future evidence and actual results could differ materially from those set forth in, contemplated by, or underlying these statements. In light of these risks and uncertainties, there can be no assurance that these statements are now or will prove to be accurate or complete in any way. Unless otherwise indicated, performance results are gross of applicable fees and expenses and presume reinvestment of income. Benchmarks and financial indices are shown for illustrative purposes only, may not be available for direct investment, are unmanaged, assume reinvestment of income, do not reflect the impact of any management or incentive fees and have limitations when used for comparison or other purposes because they may have different volatility or other material characteristics (such as number and types of instruments). Certain information is based on data provided by third-party sources and, although believed to be reliable, has not been independently verified and its accuracy or completeness cannot be guaranteed.

This material has been furnished upon request, solely for your information and may not be reproduced or otherwise disseminated in whole or in part without our prior written consent.

NOTES TO HYPOTHETICAL INFORMATION

This material contains certain hypothetical performance and portfolio information, as indicated. The hypothetical portfolios have been constructed using unmanaged financial indices to represent certain assets classes and are intended solely to illustrate the potential impact of implementing a general investment strategy. No representation is made about the overall hypothetical portfolios or their suitability or potential benefits for any client or investor and no advice or recommendation is given with respect to such hypothetical portfolios, which are not intended to be managed by MACRO Consulting Group and are included for illustration purposes only. The hypothetical portfolios do not represent actual client or investor accounts. Hypothetical information, including hypothetical performance results, have many inherent limitations, some of which are generally described below. They are generally prepared with the benefit of hindsight, may not involve financial risk or reflect actual trading or asset allocations for any portfolio and therefore do not reflect the impact that economic and market factors may have had on the manager's or advisor's investment decisions for that portfolio. In fact, there are frequently sharp differences between hypothetical results and the actual record subsequently achieved. No representation is made that such portfolio's performance would have been the same as such hypothetical results had portfolio been in existence during such time. Another limitation is that investment decisions reflected in the hypothetical information were not made using that portfolio assets or asset allocation strategy under actual market conditions and therefore cannot completely account for the impact of financial risk on the manner in which the portfolio would have been managed and the assets allocated. For example, the ability to withstand losses or to adhere to a particular trading program in spite of trading losses are material points which can also adversely affect actual trading results. There are numerous other factors related to the markets in general or to the implementation of any specific trading program which cannot be fully accounted for in the preparation of hypothetical performance results and all of which can adversely affect actual trading results.

The performance data quoted represents past performance; past performance does not guarantee future results; the investment return and principal value of an investment will fluctuate; current performance may be lower or higher than the performance quoted. Returns for performance for one year and under are cumulative, not annualized. Short term performance, in particular, is not a good indication of the portfolio's future performance, and an investment should not be made based solely on returns.

ADDITIONAL INFORMATION

- Views and opinions expressed may change based on market and other conditions.
- Investment decisions should be based on an individual's own goals, time horizon, and tolerance for risk.
- Past performance is no guarantee of future results.
- Investing involves risk.
- Diversification does not ensure a profit or guarantee against loss.
- All indices are unmanaged and performance of the indices include reinvestment of dividends and interest income, unless otherwise noted, are not illustrative of any particular investment and an investment cannot be made in any index.
- Although bonds generally present less short-term risk and volatility than stocks, bonds do contain interest rate risk (as interest rate rise, bond prices usually fall and vice versa) and the risk of default, or the risk that an issuer will be unable to make income or principal payments.
- Additionally, bonds and short-term investments entail greater inflation risk, or the risk that the return of an investment will not keep up with increases in the prices of goods and services, than stocks.
- Foreign investments involve greater risks than U.S. investments, including political and economic risks and the risk of currency fluctuations, all of which may be magnified in emerging markets.
- The municipal market is volatile and can be significantly affected by adverse tax, legislative, or political changes and the financial condition of the issuers of municipal securities.
- Interest rate increases can cause the price of a debt security to decrease.
- Stock values fluctuate in response to the activities of individual companies and general market and economic conditions, domestically and abroad.